

Heavy Duty Doorsets

High specification single, double and bi-fold steel industrial doorsets designed and produced for commercial and industrial applications.

Applications

- Sub-stations
- Plant rooms
- Transformer chambers
- Oil stores
- Pump rooms
- Gas cylinder storage
- Bin stores



Heavy Duty Doorsets

Features

- Singles, Double, 3-leaf or 4-leaf door sets with or without over panels.
- Plain or fully louvred over panels.
- Different louvre configurations.
- Excellent airflow characteristics.
- Aesthetically pleasing.
- Through frame fixing or 3-hole Fixing lug option, dependant of frame profile.
- Door hold open stays (90°) fitted as standard.
- Non-fire rated.
- Architectural marine grade polyester powder coat finishes as standard.

Sizes

NO OVERPANEL		Structural Opening		Frame		Leaf		Height
		Width	Height	Width	Height	Width		
						Active	Passive	
Single	Min	470	1010	460	1000	443*	N/A	978
	Max	1280	2520	1270	2510	1253	N/A	2488
Leaf & 1/2	Min	1240	1010	1230	1000	774	436*	978
	Max	2050	2520	2040	2510	774	1246	2488
Double	Min	910	1010	900	1000	440*	440*	978
	Max	2520	2520	2510	2510	1245	1245	2488
Triple	Min	1690	1010	1680	1000	774	441*	976
	Max	3300	2520	3290	2510	774	1246	2486
4 Leaf	Min	2460	1010	2450	1000	774	437*	976
	Max	3570	2520	3560	2510	774	1242	2486

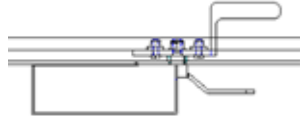
WITH OVERPANEL		Structural Opening		Frame		Leaf		Overpanel		
		Width	Height	Width	Height	Width		Height	Width	Height
						Active	Passive			
Single	Min	470	2250	460	2240	443*	N/A	2032	370	150
	Max	1280	4000	1270	3990	1253	N/A	2032	1180	1900
Leaf & 1/2	Min	1240	2250	1230	2240	774	436*	2032	1140	150
	Max	2050	4000	2040	3990	774	1246	2032	1950	1900
Double	Min	910	2250	900	2240	440*	440*	2032	810	150
	Max	2520	4000	2510	3990	1245	1245	2032	2420	1900
Triple	Min	1690	2250	1680	2240	774	441*	2032	1590	150
	Max	3300	4000	3290	3990	774	1246	2032	3200	1900
4 Leaf	Min	2460	2250	2450	2240	774	437*	2032	2360	150
	Max	3570	4000	3560	3990	774	1242	2032	3970	1900

*Leaf widths of less than 750mm cannot be louvred.

Heavy Duty Doorsets

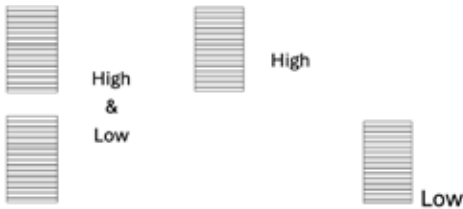
Door Construction

All leaves are made from 6mm thick steel plate with louvre blades, if required, formed from 2.5mm thick steel welded in.



Louvre Section

Louvre Panel configurations within door-sets can be as below or plain no louvres.



Frame

50 x 100 x 3mm rectangular hollow section to head and jambs with a 50 x 10mm threshold.

3 slot (150mm) Lugs as standard for fixing framework within the opening, (fixings supplied).

All fully demountable construction.

Hinge parts welded to frame and door leaf.

Air Flow

Approximately 50%.

Locking

For a plant access door with no external entry an internal hasp and staple and drop bolts are recommended.

If panic escape is required a full width panic bar or push pad can be fitted with external entry via Sunray 6000 hasp and staple.

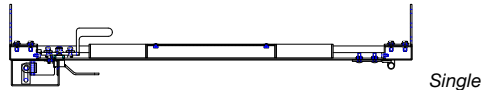
For increased security a 3-point locking system with padlockable handle can be used.

Other variations may be provided on request.

Finishes

Top coat: Architectural marine grade polyester powder coat. 30% gloss level. 60-80 microns thickness. Optional marine grade zinc rich primer for enhanced corrosion resistance. 60-80 microns thickness. Stocked range of 58 standard colours. Other colours and finishes available on request.

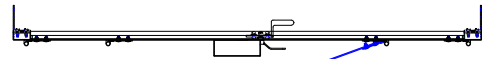
Standard Frame Option



Single



Double

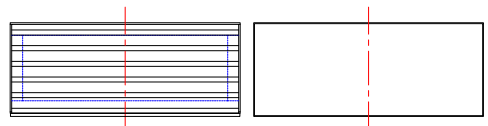


4-Leaf

Overpanel Options

Louvred

Plain



Sunray Doors
An Assa Abloy Group Company

Sunray Engineering Ltd
Kingsnorth Industrial Estate
Wotton Road, Ashford
Kent TN23 6LL

+44 (0)1233 639039
sales@sunraydoors.co.uk
www.sunraydoors.co.uk



Bespoke Design Services

Complementing our standard door ranges we also offer a complete, bespoke design service to suit specific client needs or to overcome site/building constraints.

Sunray Installation Service

We offer a full installation service covering our complete range of steel door and louvre systems. Work is carried out by our own qualified factory-skilled operatives and not sub-contractors.

Procedures are audited and our installation process is approved and certified by CHAS, Safe Contractor, Achilles Building Confidence and Achilles UVDB.

Sunray's Installation Service is certified by the LPCB/BRE to LPS 1271 for security and fire doors.

Nationwide Delivery Service

Specialist transport service includes curtain sider lorries with Moffett facility, flat bed lorries with HIAB facility and lightweight vans as applicable.



Bi-fold Heavy Duty Doors with ventilated inner leaves and full-width overpanel including optional lock protection shroud.



Registered in England Registered No: 1480089 VAT No: 630851070